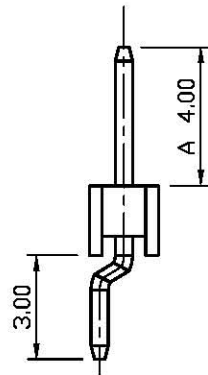
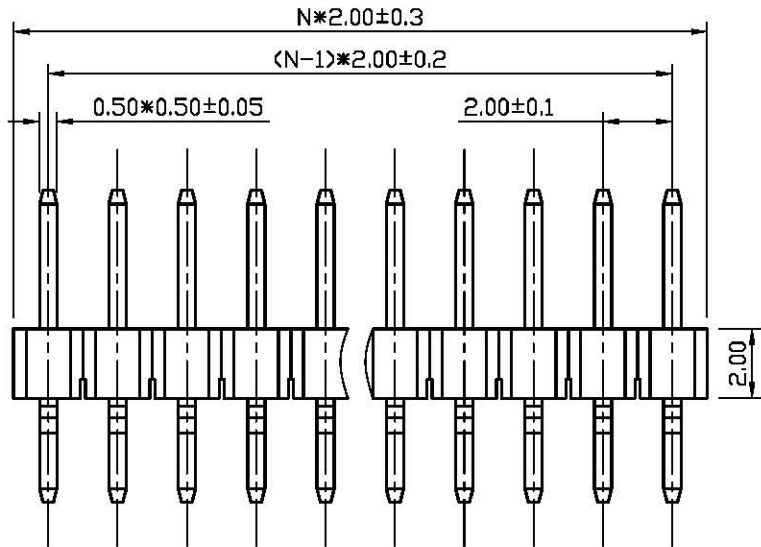


REV.	DESCRIPTION	DRAWN	CHECKED	APPROVED
A	NEW RELEASE	LJH 05/17/05'		



NOTES:

- MATERIAL & FINISHES
 - INSULATOR: THERMOPLASTIC (UL 94V-0).
 - CONTACT MATERIAL: COPPER ALLOY.
- SPECIFICATION
 - CURRENT RATING: 1.5 Amp.
 - INSULATION RESISTANCE: 1000MΩ Min.
 - DIELECTRIC WITHSTANDING: 600VAC.
 - CONTACT RESISTANCE: 20mΩ Max.
 - OPERATING TEMPERATURE: -20°C TO +80°C.
- PART NUMBER: DS1025-04
- PRODUCT NUMBER CODE:
DS1025-04 - X X X X X

CONTACTS TYPE
S: SMT TYPE
HOUSING COLOR
B: BLACK

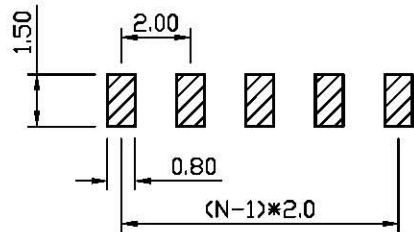
CONTACT PLATING
8: FULL GOLD FLASH

CONNECTOR TYPE
P: PLUG S: SOCKET

No. OF CONTACTS
1*2-1*X

SERIES No.
DS1025-04

A: CUSTOMER LENGTH AVAILABLE
N: NUMBER OF CONTACTS



RECOMMEND PCB LAYOUT (TOLERANCE = ±0.05)

GENERAL TOLERANCE		ANGLE TOLERANCE		PROJECTION		TITLE	SINGLE ROW RIGHT ANGLE S.M.T	
X.	±0.60	X.	±5°	UNITS	mm			
.X	±0.38	.X	±3°	SHEET SIZE	A4	SERIES	DS1025-04 SERIES	
.XX	±0.25	.XX	±2°					
DRAWING TYPE		CUSTOMER						
SCALE		1:1	SHEET		1 OF 1			
DRAWING NO.		C-DS1025-04-XXXXX						