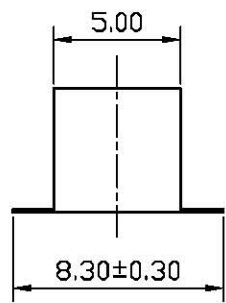
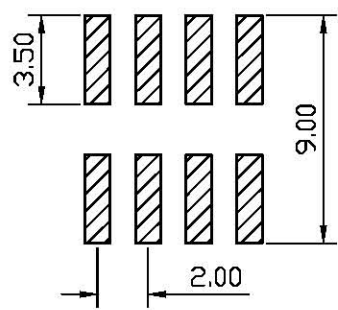


N: NUMBER OF CONTACTS/2



RECOMMAND PCB LAYOUT(TOLERANCE=±0.05)

REV.	DESCRIPTION	DRAWN	CHECKED	APPROVED
A	NEW RELEASE	LJH 06/22/05'		

NOTES:

- ELECTRICAL CHARACTERISTICS:
 - CONTACT RESISTANCE: 20mΩ Max. INITIAL.
 - DIELECTRIC WITHSTANDING VOLTAGE: 500V AC(rms) FOR 1 MINUTE.
 - INSULATION RESISTANCE: 1000MΩ Min.
- ENVIRONMENT CHARACTERISTICS:
 - OPERATING TEMPERATURE: 0°C~+85°C.
 - STORAGE TEMPERATURE: -20°C~+70°C.

- PART NUMBER: DS1026-14
- PRODUCT NUMBER CODE:
DS1026-14 - X X X X X

CONTACTS TYPE
S:SMT
HOUSING COLOR
B:BLACK
CONTACT PLATING
8: FULL GOLD FLASH
CONNECTOR TYPE
S:SOCKET
No.OF CONTACTS
2*1-2*X
SERIES No.
DS1026-14

GENERAL TOLERANCE		ANGLE TOLERANCE		PROJECTION		TITLE	SIDE ENTRY S.M.T	
X.	±0.60	X.	±5°	UNITS	mm			
.X	±0.38	.X	±3°	SHEET SIZE	A4	SERIES	DS1026-14 SERIES	
.XX	±0.25	.XX	±2°					
2	CONTACT	COPPER ALLOY	GOLD PLATED	DRAWING TYPE	CUSTOMER			
1	HOUSING	THERMOPLASTIC	UL 94 V-0	SCALE	1:1	SHEET	1 OF 1	
ITEM	PART NAME	PART NO.	MATERILAS	FINISHED	DRAWING NO.	C-DS1026-14-XXXXX		