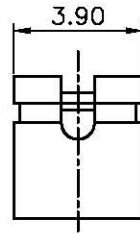
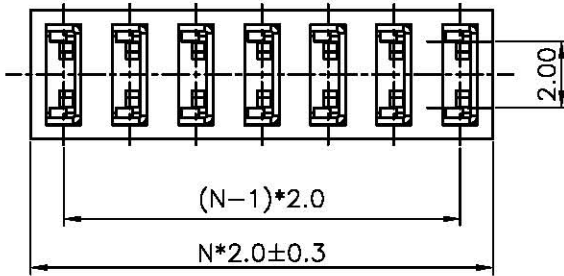


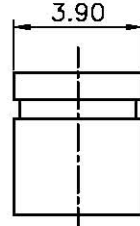
REV.	DESCRIPTION	DRAWN	CHECKED	APPROVED
A	NEW RELEASE	LJC 08/16/07'		



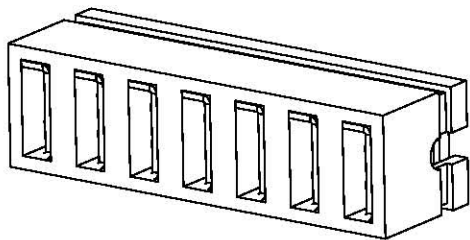
OPEN TYPE



N=Number of Ports



CLOSE TYPE



NOTES:

1. SPECIFICATION:

- 1.1 CONTACT RESISTANCE: 30mΩ MAX.
- 1.2 DIELECTRIC WITHSTANDING VOLTAGE: 250V AC(rms) FOR 1 MINUTE.
- 1.3 INSULATION RESISTANCE: 500MΩ Min.
- 1.4 OPERATING TEMPERATURE: -20°C~+80°C.

2. PRODUCT NUMBER CODE:

DS1028-01 - X X X X X

- PROFILE HEIGHT(DIM A): 3:4.30mm
- CONTACT PLATING:
F1: FULL GOLD FLASH
N: NICKEL
2: GOLD+NICKEL
- HOUSING COLOR:
B: BLACK U:BLUE Y:YELLOW
W: WHITE E:GREEN R:RED
- HOUSING TYPE:
A:OPEN
B:CLOSE
- No.OF PORTS:
3: 3ports 8: 8ports
4: 4ports 9: 9ports
5: 5ports 10: 10ports
6: 6ports
7: 7ports
- SERIES No:
DS1028-01

GENERAL TOLERANCE		ANGLE TOLERANCE		PROJECTION		TITLE	2.00mm pitch MINI JUMPER	
X.	±0.60	X.	±5'	UNITS	mm		Stack type 3-10 ports	
.X	±0.38	.X	±3'	SHEET SIZE	A4	SERIES	DS1028-01 SERIES	
.XX	±0.25	.XX	±2'					
DRAWING TYPE		CUSTOMER						
SCALE		1:1	SHEET	1 OF 1				
DRAWING NO.		C-DS1028-01-XXXXX						