

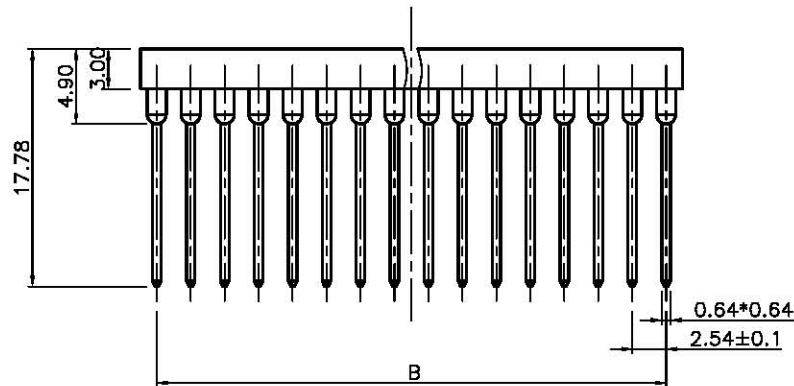
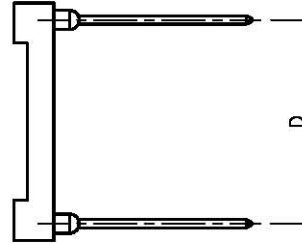
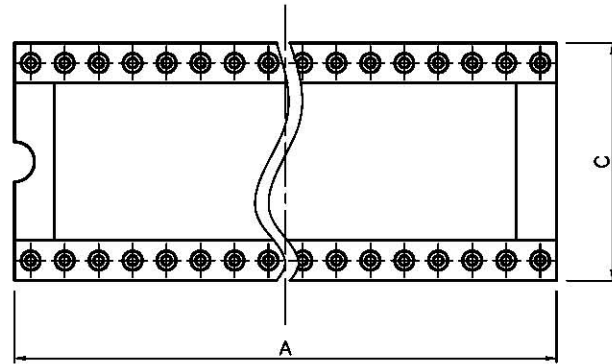
REV.	DESCRIPTION	DRAWN	CHECKED	APPROVED
A	NEW RELEASE	LL 09/26/06'	~	LJC 09/26/06'
B	新增单排, 双排规格	LL 11/29/06'		

NOTES:

- MATERIAL
 - INSULATOR: POLYESTER (UL 94V-0).
 - CONTACT: BRASS.
 - FINISH: TIN PLATED.
- SPECIFICATION
 - CURRENT RATING: 1.0A/pin max.
 - VOLTAGE RATING: 60V AV/DC.
 - CONTACT RESISTANCE: 20mΩ max.
 - INSULATION RESISTANCE: 100MΩ min.
 - WITHSTANDING VOLTAGE: 500V AC/minute.
 - TEMPERATURE RANGE: -25°C to +80°C.
- PART NUMBER: DS1007
- PRODUCT NUMBER CODE:

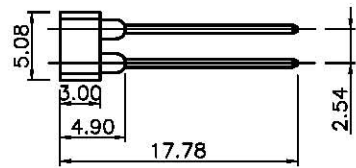
DS1007 - X X X X X X X

- L CENTRAL SUPPORT
- S: W/ CENTRAL SUPPORT
- X: W/o CENTRAL SUPPORT
- CLIP PLATING
- F6: 3u" Gold
- T1: Tin
- HOUSING MATERIAL
- S: PBT
- WIDTH (DIM D)
- N: 7.62mm (06-24P)
- W: 15.24mm (24-40P)
- X: 1*40 & 2*40 only
- PIN PLATING
- T1: Tin
- CLIP TYPE
- B: 4 FINGERS
- No. OF CONTACTS
- 06 08 14 16 18
- 20 24 28 32 40
- (B) 1*1~1*40
- 2*1~2*40

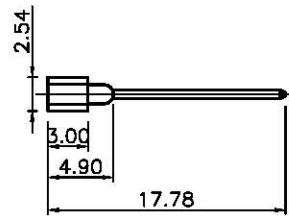


Dimension

Position	A±0.5	B±0.2	C±0.3	D±0.2
06	7.62	5.08	10.16	7.62
08	10.16	7.62	10.16	7.62
14	17.78	15.24	10.16	7.62
16	20.32	17.78	10.16	7.62
18	22.86	20.34	10.16	7.62
20	25.40	22.86	10.16	7.62
24	30.48	27.94	10.16	7.62
28	35.56	33.02	10.16	7.62
24	30.48	27.94	17.78	15.24
28	35.56	33.02	17.78	15.24
32	40.64	38.10	17.78	15.24
40	50.80	48.26	17.78	15.24



(B) Dual rows



(B) Single row

GENERAL TOLERANCE		ANGLE TOLERANCE		PROJECTION	TITLE	DIP IC SOCKET WIRE WRAP TYPE	
X.	±0.60	X.	±5°	mm		STANDARD 17.78mm LENGTH	
.X	±0.38	.X	±3°	A4	SERIES	DS1007 SERIES	
.XX	±0.25	.XX	±2°				
DRAWING TYPE		CUSTOMER		广东中南电子电器有限公司 www.zn-cn.com			
SCALE	1:1	SHEET	10F1				
DRAWING NO.	C-DS1007-XXXXXXX						