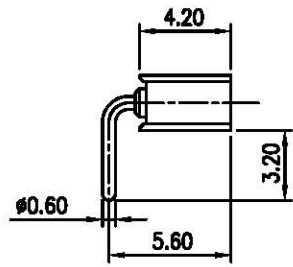
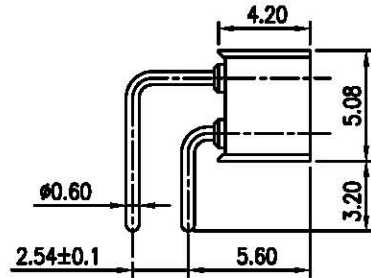


REV.	DESCRIPTION	DRAWN	CHECKED	APPROVED
A	NEW RELEASE	LL 07/01/06'		

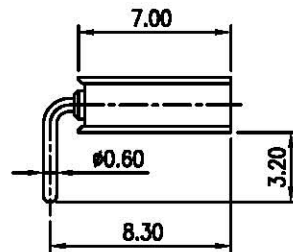
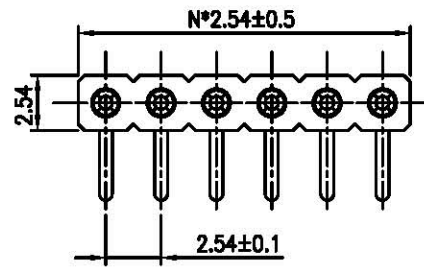
R/A TYPE



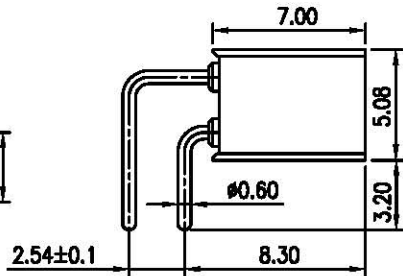
SINGLE ROW



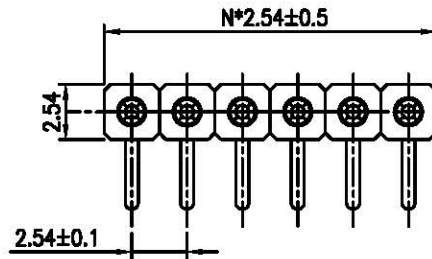
DUAL ROWS



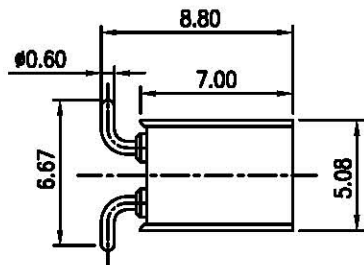
SINGLE ROW



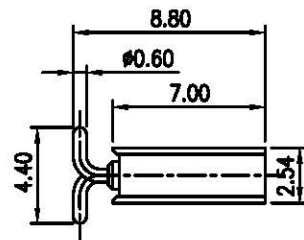
DUAL ROWS



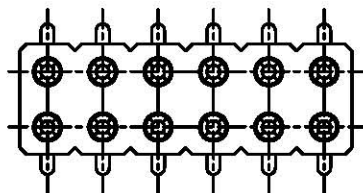
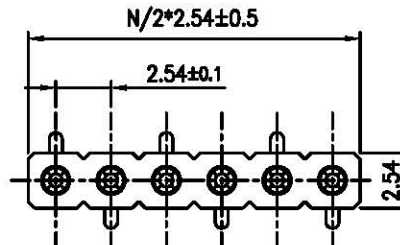
SMT TYPE



DUAL ROWS



SINGLE ROW



NOTES:

- ELECTRICAL:
 - Current rating: 3Amps/contact max.
 - Contact resistance: $\leq 20\text{m}\Omega/\text{contact}$
 - Insulation resistance: >1000M Ω at V=100V.
 - Operating voltage: 60V AC/DC.
- MECHANICAL:
 - Average insertion force with steel pin of $\phi 4.3\text{mm}$: <math>< 250\text{g}</math>
 - Average withdrawal force with steel pin of $\phi 0.43\text{mm}$: >15g.
 - Mechanical life cycle: min 200.
 - Operating temperatures: Gold plated: -55°C to +105°C.
Tin plated: -40°C to +105°C.

3. PRODUCT NUMBER CODE:

DS1002-08 - X X X X X

- Profile height
 - 420: 4.20mm
 - 700: 7.00mm
- CLIP PLATING OPTION
 - 1: Tin 150u"
 - 2: Tin 200u"
 - 3: G/F
 - 4: Gold 3u"
 - 5: Gold 10u"
 - 6: Gold 15u"
- PIN PLATING OPTION
 - 1: Tin 150u"
 - 2: Tin 200u"
 - 3: G/F
 - 4: Gold 3u"
 - 5: Gold 10u"
 - 6: Gold 15u"
- MOUNTING TYPE
 - R: R/A TYPE
 - S: SMT TYPE
- No. OF CONTACTS
 - 1*1 to 1*40
 - 2*2 to 2*40
- SERIES NO
DS1002-08

GENERAL TOLERANCE		ANGLE TOLERANCE	
X.	±0.60	X.	±5°
.X	±0.38	.X	±3°
.XX	±0.25	.XX	±2°
DRAWING TYPE		CUSTOMER	
SCALE		1:1 SHEET 10F1	
DRAWING NO.		C-DS1002-08-XXXXX	

PROJECTION	TITLE
	SMT & R/A IC SOCKET PITCH 2.54mm
UNITS	mm
SHEET SIZE	A4
SERIES	DS1002-08 SERIES
MATING PIN $\phi 0.47$	

广东中南电子电器有限公司

www.zn-cn.com