

REV.	DESCRIPTION	DRAWN	CHECKED	APPROVED
A	NEW RELEASE	LL 06/15/06'		

NOTES:

1. ELECTRICAL:
 - 1.1 Current rating: 3Amps/contact max.
 - 1.2 Contact resistance: $\leq 20m\Omega$ /contact.
 - 1.3 Insulation resistance: $> 1000M\Omega$ at V=100V.
 - 1.4 Operating voltage: 60V AC/DC.
2. MECHANICAL:
 - 2.1 Average insertion force with steel pin of $\phi 0.43mm$: $< 250g$.
 - 2.2 Average withdrawal force with steel pin of $\phi 0.43mm$: $> 15g$.
 - 2.3 Mechanical life cycle: min 200.
 - 2.4 Operating temperatures: Gold plating: $-55^{\circ}C$ to $+105^{\circ}C$.
Tin plating: $-40^{\circ}C$ to $+105^{\circ}C$.
 - 2.5 Soldering temperature: $260 \pm 2^{\circ}C$, $5 \pm 0.5s$.

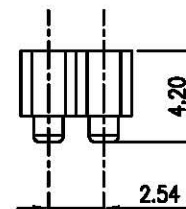
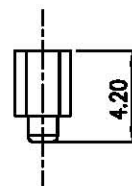
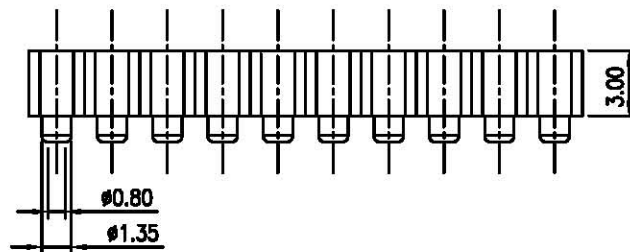
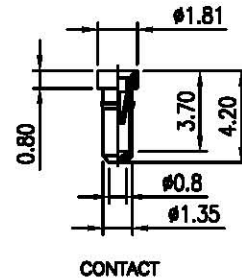
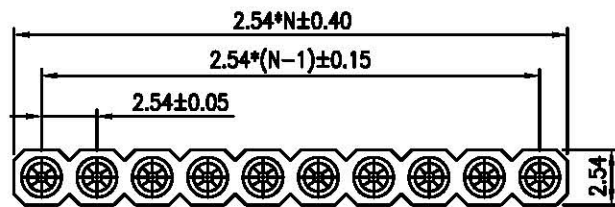
3. PRODUCT NUMBER CODE:

DS1002-06 - X X X

CLIP PLATING
 6: Full Tin
 8: Full gold flash
 C: Full gold 3u"
 A: Full gold 10u"

PIN PLATING
 6: Full Tin
 8: Full gold flash
 C: Full gold 3u"
 A: Full gold 10u"

No. OF CONTACTS
 1*1 to 1*40
 2*2 to 2*40



GENERAL TOLERANCE		ANGLE TOLERANCE		PROJECTION		TITLE	IC SOCKET PITCH 2.54mm PIN LENGTH 4.20mm	
X.	±0.60	X.	±5'	UNITS	mm			
.X	±0.38	.X	±3'	SHEET SIZE	A4	SERIES	DS1002-06 SERIES	
.XX	±0.25	.XX	±2'	广东中南电子电器有限公司 www.zn-cn.com				
DRAWING TYPE		CUSTOMER						
SCALE	1:1	SHEET	10F1					
DRAWING NO.		C-DS1002-06-XXXX						