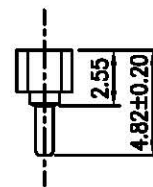
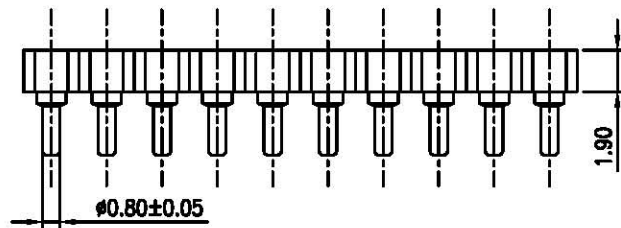
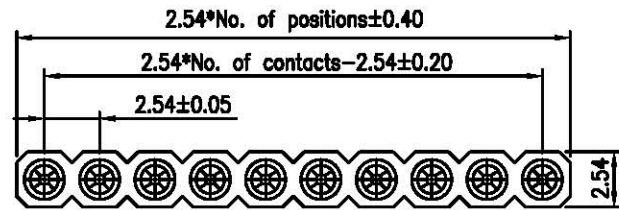


REV.	DESCRIPTION	DRAWN	CHECKED	APPROVED
A	NEW RELEASE	LJH 01/06/06'		

NOTES:

1. MATERIAL:
 - 1.1 Pin(outer sleeve): Brass, machined CuZn38Pb2.
 - 1.2 Clip(contact 4finger): Beryllium Copper or phosphor bronze.
 - 1.3 Insulator(black): Glass filled thermoplastic polyester UL94V-0.

2. ELECTRICAL:
 - 2.1 Current rating: 3Amps/contact max.
 - 2.2 Contact resistance: $\leq 20m\Omega$ /contact.
 - 2.3 Insulation resistance: $> 1000M\Omega$ at $V=100V$.
 - 2.4 Operating voltage: 60V AC/DC.
3. MECHANICAL:
 - 3.1 Average insertion force with steel pin of $\phi 0.43mm$: $< 250g$.
 - 3.2 Average withdrawal force with steel pin of $\phi 0.43mm$: $> 15g$.
 - 3.3 Mechanical life cycle: min 200.
 - 3.4 Operating temperatures: Gold plated: $-55^{\circ}C$ to $+105^{\circ}C$.
Tin plated: $-40^{\circ}C$ to $+105^{\circ}C$.
 - 3.5 Soldering temperature: $+260\pm 2^{\circ}C$, $5\pm 0.5s$.
4. PRODUCT NUMBER CODE:



DS1002-05 - X X X

CLIP PLATING

- 6: Full Tin
- 8: Full gold flash
- C: Full gold 3u"
- A: Full gold 10u"

PIN PLATING

- 6: Full Tin
- 8: Full gold flash
- C: Full gold 3u"
- A: Full gold 10u"

No.OF CONTACTS

1*1 to 1*40

GENERAL TOLERANCE		ANGLE TOLERANCE		PROJECTION		TITLE	IC SOCKET PITCH 2.54mm	
X.	±0.60	X.	±5'	UNITS	mm		PIN LENGTH 4.82mm	
.X	±0.38	.X	±3'	SHEET SIZE	A4	SERIES	DS1002-05 SERIES	
.XX	±0.25	.XX	±2'	广东中南电子电器有限公司 http://zn-cn.com				
DRAWING TYPE		CUSTOMER						
SCALE		1:1	SHEET 10F1					
DRAWING NO.		C-DS1002-05-XXXX						