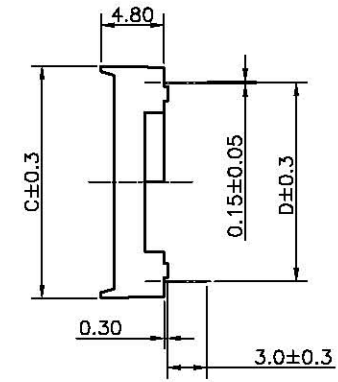
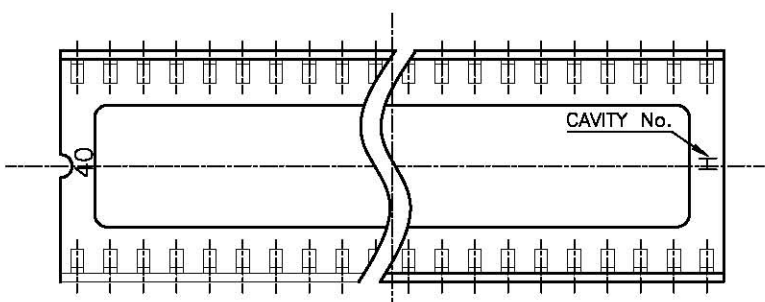
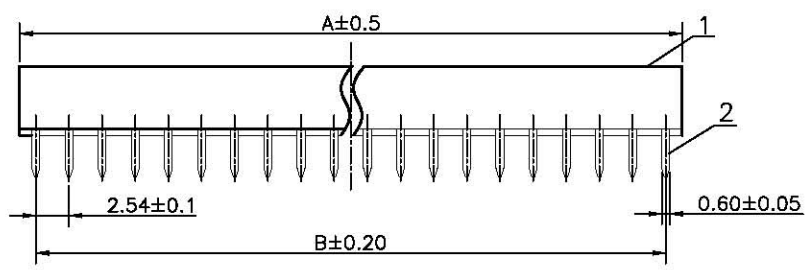


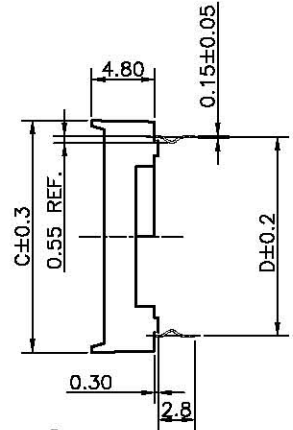
| REV. | DESCRIPTION | DRAWN | CHECKED | APPROVED |
|------|--------------------|---------------|---------|---------------|
| A | NEW RELEASE | LJH 09/28/05' | ~ | LJC 09/28/05' |
| B | ADD W/ Kink Figure | LL 11/04/06' | | |
| | | | | |



- NOTES:
- ELECTRICAL CHARACTERISTICS:
 - CONTACT RESISTANCE: 20mΩ Max.
 - DIELECTRIC WITHSTANDING VOLTAGE: 500V AC(rms) FOR 1 MINUTE.
 - INSULATION RESISTANCE: 1000MΩ Min.
 - ENVIRONMENT CHARACTERISTICS:
 - OPERATING TEMPERATURE: 0°C~+85°C.
 - STORAGE TEMPERATURE: -20°C~+70°C.
 - PART NUMBER: DS1009
 - PRODUCT NUMBER CODE:
 DS1009 - X X X X X
 Central support
 S: W/ central support
 X: W/O central support
 Width(DIM D)
 N: 7.62mm(06~28p)
 W: 15.24mm(24~42p)
 Contact plating
 T1: Tin
 Contact type
 A: W/O kink
 B: W/ kink
 No.OF CONTACTS
 06 08 14 16 18 20
 24 28 32 40 42
 Series No.
 DS1009



| Position | Dimension | | | |
|----------|-----------|-------|-------|-------|
| | A | B | C | D |
| 06 | 7.62 | 5.08 | 10.16 | 7.62 |
| 08 | 10.16 | 7.62 | 10.16 | 7.62 |
| 14 | 17.78 | 15.24 | 10.16 | 7.62 |
| 16 | 20.32 | 17.78 | 10.16 | 7.62 |
| 18 | 22.86 | 20.32 | 10.16 | 7.62 |
| 20 | 25.40 | 22.86 | 10.16 | 7.62 |
| 24 | 30.48 | 27.94 | 10.16 | 7.62 |
| 24 | 30.48 | 27.94 | 17.78 | 15.24 |
| 28 | 35.56 | 33.02 | 10.16 | 7.62 |
| 28 | 35.56 | 33.02 | 17.78 | 15.24 |
| 32 | 40.64 | 38.10 | 17.78 | 15.24 |
| 40 | 50.80 | 48.26 | 17.78 | 15.24 |
| 42 | 53.34 | 51.00 | 17.78 | 15.24 |



Ⓑ W/ Kink Figure

| | | | | |
|-------------------|-----------------|------------|----|-------------------------------|
| GENERAL TOLERANCE | ANGLE TOLERANCE | PROJECTION | ⊕ | TITLE |
| X. ±0.60 | X. ±5' | UNITS | mm | IC SOCKET PITCH 2.54mm(0.100) |
| .X ±0.38 | .X ±3' | SHEET SIZE | A4 | SERIES DS1009 SERIES |
| .XX ±0.25 | .XX ±2' | | | |

| | | | | | | | |
|------|-----------|----------|---------------|------------|--------------|------------------|------------|
| 2 | CONTACT | | COPPER ALLOY | TIN PLATED | DRAWING TYPE | CUSTOMER | |
| 1 | HOUSING | | THERMOPLASTIC | UL 94 V-0 | SCALE | 1:1 | SHEET 10F1 |
| ITEM | PART NAME | PART NO. | MATERILAS | FINISHED | DRAWING NO. | C-DS1009-XXXXX-B | |

广东中南电子电器有限公司

www.zn-cn.com