

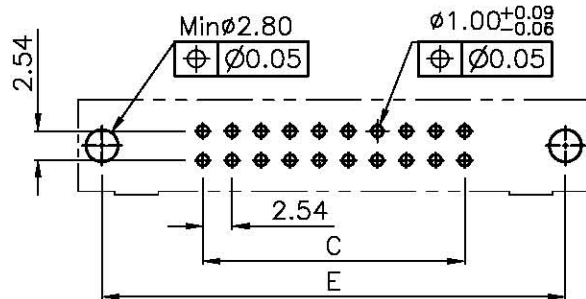
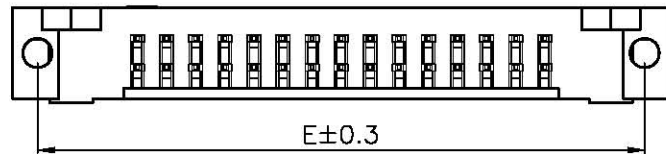
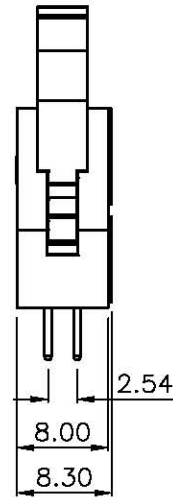
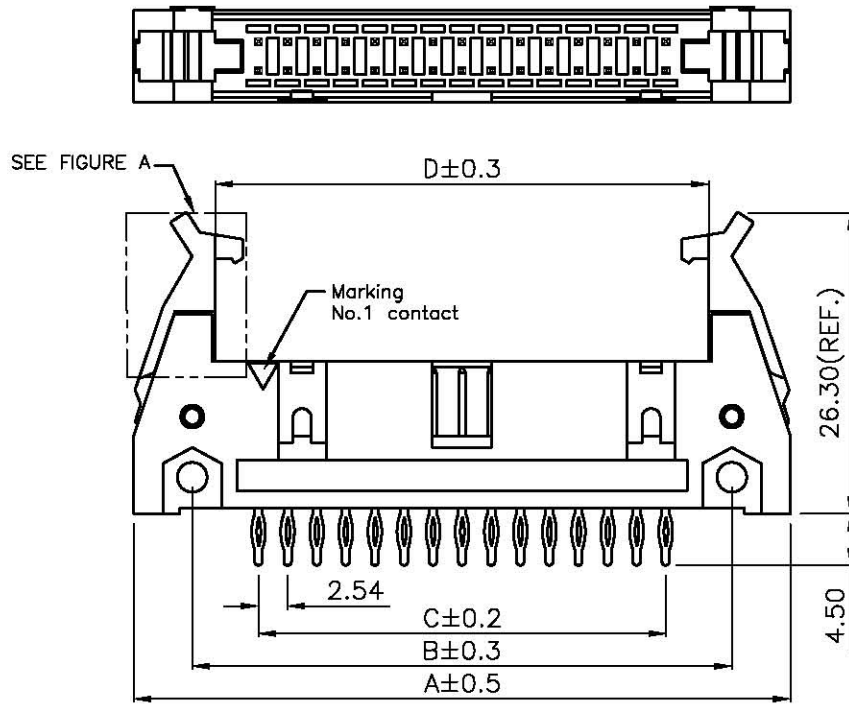
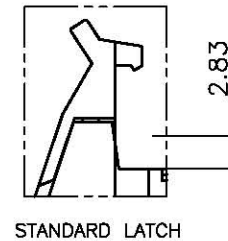
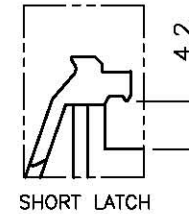
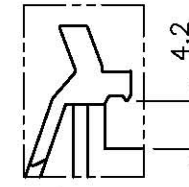
REV.	DESCRIPTION	DRAWN	CHECKED	APPROVED
A	NEW RELEASE	YCH 01/05/09'	~	

NOTES:

- ELECTRICAL CHARACTERISTICS:
  - CONTACT RESISTANCE: 20mΩ Max. INITIAL.
  - DIELECTRIC WITHSTANDING VOLTAGE: 500V AC(rms) FOR 1 MINUTE.
  - INSULATION RESISTANCE: 1000MΩ Min.
- ENVIRONMENT CHARACTERISTICS:
  - OPERATING TEMPERATURE: 0°C~+85°C.
  - STORAGE TEMPERATURE: -20°C~+70°C.
- PRODUCT NUMBER CODE:

DS1011-05- X X X X

- LOCK DIM.
  - 8: 8.60mm(standard latch)
  - 2: 4.20mm(short latch)
  - S: 4.2mm(special latch)
- HOUSING COLOR
  - B: BLACK
  - A: GRAY
- CONTACT PLATING
  - Ti: SELECTIVE GOLD FLASH
  - Si: FULL GOLD FLASH
- No.OF CONTACTS
  - 10 14 16 20 26 30
  - 34 40 50 60 64



AVAILABLE DIMENSION TABLE

No.of Contacts	10	14	16	20	26	30	34	40	50	60	64
A	31.92	37.00	39.54	44.62	52.24	57.32	62.40	70.02	82.72	95.42	100.50
B	21.72	26.80	29.34	34.42	42.04	47.12	52.20	59.82	72.52	85.22	90.30
C	10.16	15.24	17.78	22.86	30.48	35.56	40.64	48.26	60.96	73.66	78.74
D	18.22	23.30	25.84	30.92	38.54	43.62	48.70	56.32	69.02	81.72	86.80
E	27.76	32.84	35.38	40.46	48.08	53.16	58.24	65.86	78.56	91.26	109.04

GENERAL TOLERANCE		ANGLE TOLERANCE	
X.	±0.60	X.	±5'
.X	±0.38	.X	±3'
.XX	±0.25	.XX	±2'

PROJECTION	TITLE	SHOUDED HEADER PITCH 2.54mm PRESS-FIT TYPE	
UNITS	mm		
SHEET SIZE	A4	SERIES	DS1011-05 SERIES

DRAWING TYPE	CUSTOMER		
SCALE	1:1	SHEET	1 OF 1
DRAWING NO.	C-DS1011-05-XXXX		

广东中南电子电器有限公司  
www.zn-cn.com